
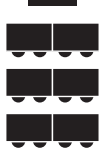





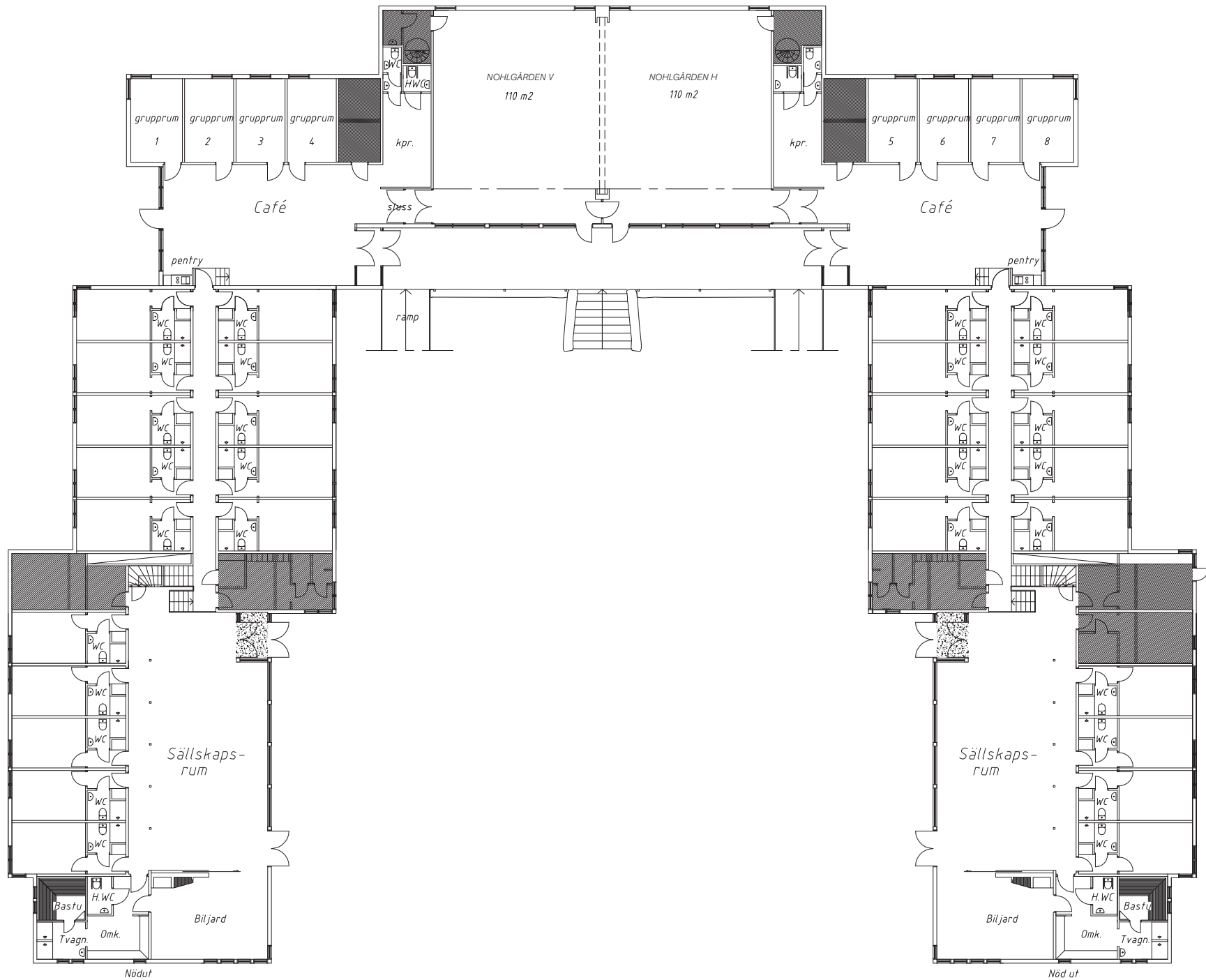


# NOHLGÅRDEN

## LOKALÖVERSIKT - ASPENÄS HERRGÅRD

LOKAL	Bredd	Längd	m <sup>2</sup>	 U-BORD	 SKOL	 BIO	 ÖAR	 CIRKEL	 FISKBEN	 STYRELSE
Nohlgården V	9,16	11,98	110	30	70	90	56	42	48	-
Grupprum 1-4	2,82	4,9	14	-	-	-	-	-	-	10
Nohlgården H	9,16	11,98	110	30	70	90	56	42	48	-
Grupprum 5-8	2,82	4,9	14	-	-	-	-	-	-	10
Nohlgården HV	23,96	9,16	227	-	160	240	120	-	112	-





NOHLGÅRDEN HV



NOHLGÅRDEN V

